

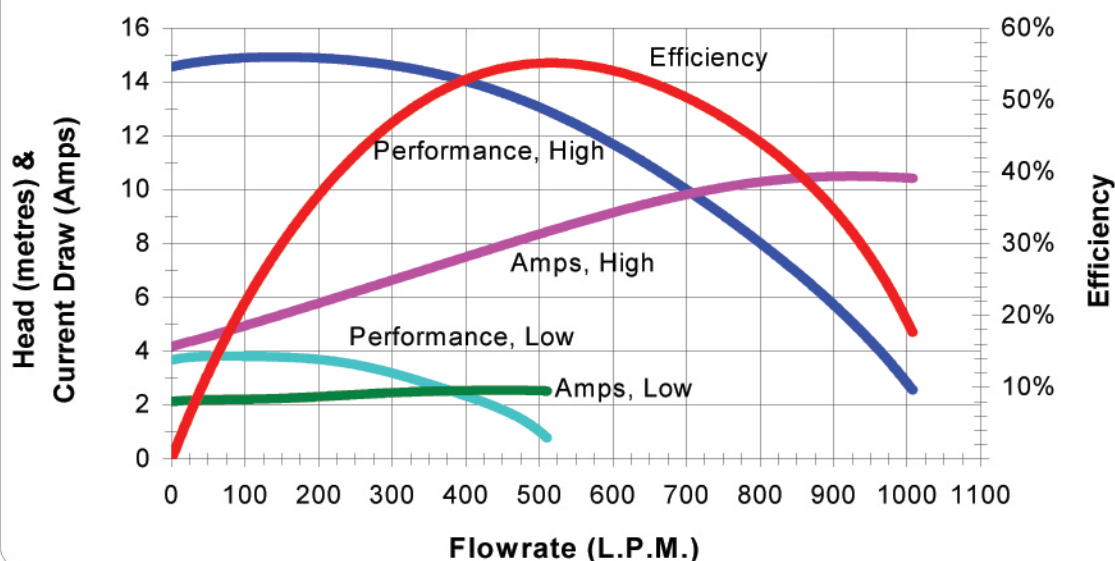


## Product Specification Sheet

### Model XP2E902524

Aqua-Flo's energy conscience offering, the XP2e, provides greater flow rates than the XP2 while improving the overall energy efficiency of the spa, reducing operating costs. The XP2e allows for the use of more jets per pump and in some applications, the elimination of the diverter valve.

### Performance Curves



These performance curves are a result of in-lab testing using 3" suction line, actual performance may vary based on manufacturing tolerances and application.

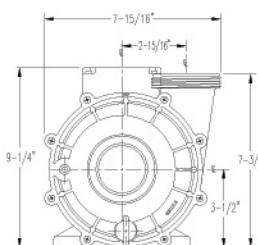
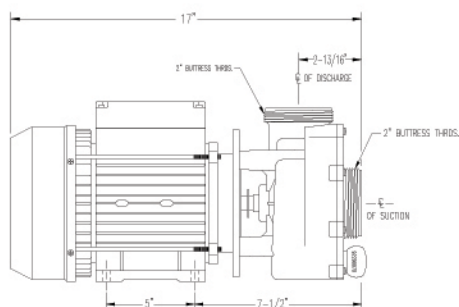
**Performance Table**

Metres	Open	6	8	10	12	14
LPM	1007	890	802	698	582	400
<b>BEP</b>	<b>530 LPM</b>					

**Motor Data**

<b>Manufacturer:</b>	EMG	<b>AF Part Number:</b>	93556595	<b>Model:</b>	N/A
<b>HP:</b>	2.5	<b>FLA:</b>	10.3/3.2	<b>Volts:</b>	220-240
<b>Freq:</b>	50	<b>Phase:</b>	1	<b>Frame:</b>	90
				<b>Speed:</b>	2

Shipping Weight: 41.09 lbs Pumps per pallet layer: 10



**Gecko Alliance - Pump Division**

Maker of Aqua-Flo by Gecko Pumps for the Leisure Water Industry  
5651 Schaefer Avenue, Chino, California 91710-9048 USA, 909.591.7453, Fax: 909.627.5660  
www.geckoalliance.com

