

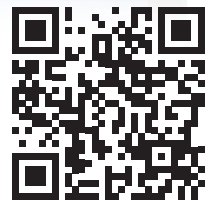


BP501/601 THE NEXT GENERATION OF SPA CONTROLS



SPECS

- Wi-Fi Ready
- New Features in New Enclosure
- Works with Balboa's TP and SpaTouch™ Panels
(The only exception is the TP200 & 500 cannot be used with more than 2 pumps)
- Based on Balboa's most popular model's
- Higher flame retardant and impact resistant materials



FOR MORE INFORMATION
www.balboawatergroup.com/BP501

MANUFACTURED UNDER ONE OR MORE OF THESE PATENTS: U.S. PATENTS: 5332944, 5361215, 5550753, 5559720, 5,883,459, 6253227, 6282370, 6590188, 6976052, 6965815, 7030343, 7,417,834 B2, CANADIAN PATENT: 2342614, AUSTRILIAN PATENT: 2373248 OTHER PATENTS BOTH FOREIGN AND DOMESTIC APPLIED FOR AND PENDING. ALL SOFTWARE COPYRIGHT BALBOA WATER GROUP.

12.20 BP501/601
 ©2020 Balboa Water Group. Single Source Solution. All rights reserved.
 3030 Airway Avenue | Costa Mesa, CA 92626 | p 714.384.0384 | www.balboawater.com
 Specifications subject to change without notice.



BP501/601

INCOMPARABLE SYSTEM RELIABILITY

The BP501/601 is based on Balboa's most popular models, utilizing advanced technology and higher flame retardant with impact resistant materials. Wi-Fi Enabled.

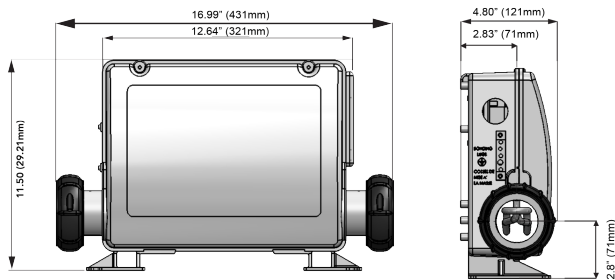
System Specifications

Voltage Supply: (BP501: 120V or 240V) (BP601: 230V)

Sensors: M7 patented temperature probes

Certifications: (BP501: UL recognized) (BP601: NEMKO)

Spa Lights Controls: 1 Amp Max



PANELS

The BP501/601 works with all of Balboa's TP and SpaTouch™ Panels. Visit for more information:

www.balboawater.com/Topside-Panels

Note: (The only exception is the TP200 & 500 cannot be used with more than 2 pumps)



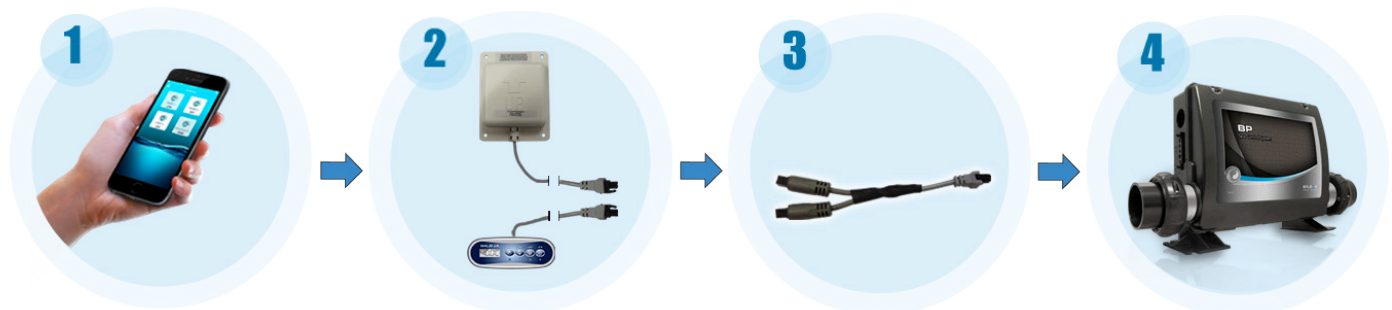
TP Panels



SpaTouch™ Panels

BP501/601 Wi-Fi Enabled | Wireless System Control

Now you can control your system wirelessly with ControlMySpa™. With a few simple connections and some additional hardware you can have full control of your spa system. Get it on Google Play or available on the app store.



Wireless Connection

Wi-Fi Module (50350)

Y-Cable 4 pin (25657)

BP501 or BP601

12.20 BP501/601

©2020 Balboa Water Group. Single Source Solution. All rights reserved.
3030 Airway Avenue | Costa Mesa, CA 92626 | p 714.384.0384 | www.balboawater.com
Specifications subject to change without notice.

BALBOA
water group

BP501/601

BP501 System Specifications (UL Recognized)

Material No.	Descriptions	Circ	Pump 1	Pump 2 or Blower	Pump 3 (Optional with Expander Card)	Blower Option	Heater
56485-XX*	SYSTEM BALBOA BP501G1 800INC 5.5kW	With 1 spd Pump 1 only	2 spd without circ/ 1 spd with circ	1 spd	NA	When no Pump 2	5.5 kW 800 Incoloy
56486-XX*	SYSTEM BALBOA BP501G1 825INC	With 1 spd Pump 1 only	2 spd without circ/ 1 spd with circ	1 spd	NA	When no Pump 2	5.5 kW 825 Incoloy
56487-XX*	SYSTEM BALBOA BP501G1 TITANIUM	With 1 spd Pump 1 only	2 spd without circ/ 1 spd with circ	1 spd	NA	When no Pump 2	5.5 kW Titanium
56567-XX*	SYSTEM BALBOA BP501G1 800INC 4.0 kW	With 1 spd Pump 1 only	2 spd without circ/ 1 spd with circ	1 spd	NA	When no Pump 2	4.0 kW 800 Incoloy
56480-XX*	SYSTEM BALBOA BP501G2 800INC	Yes	2 spd	1 spd	NA	When no Pump 2	5.5 kW 800 Incoloy
56482-XX*	SYSTEM BALBOA BP501G2 TITANIUM	Yes	2 spd	1 spd	NA	When no Pump 2	5.5 kW Titanium
56582-XX*	SYSTEM BALBOA BP501G3 800INC 5.5kW	No	2 spd	2 spd or 1 spd	1 spd	When no Pump 3	5.5 kW 800 Incoloy
56583-XX*	SYSTEM BALBOA BP501G3 TITANIUM	No	2 spd	2 spd or 1 spd	1 spd	When no Pump 3	5.5 kW 800 Incoloy
56584-XX*	SYSTEM BALBOA BP501G3 800INC 4.0kW	No	2 spd	2 spd or 1 spd	1 spd	When no Pump 3	4.0 kW 800 Incoloy

BP601 System Specifications - Single Phase (CE Recognized)

Material No.	Descriptions	Circ	Pump 1	Pump 2 or Blower	Pump 3 (Optional with Expander Card)	Blower Option	Heater
56498-XX*	SYSTEM BALBOA BP601G1 825INC 3.0kW	With 1 spd Pump 1 only	2 spd without circ / 1 spd with circ	1 spd	NA	When no Pump 2	3.0 kW 825 Incoloy
56499-XX*	SYSTEM BALBOA BP601G1 TITANIUM	With 1 spd Pump 1 only	2 spd without circ/ 1 spd with circ	1 spd	NA	When no Pump 2	3.0 kW Titanium
59393-XX*	SYSTEM BALBOA BP601G1 825INC 2.0kW	With 1 spd Pump 1 only	2 spd without circ/ 1 spd with circ	1 spd	NA	When no Pump 2	2.0 kW 825 Incoloy

Compatible Plumbing Kits (Coupling nuts and seals included)

55911 2" Tailpieces. Compatible Plumbing Kits (Coupling nuts and seals included).