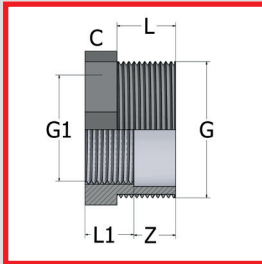
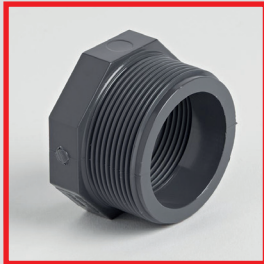


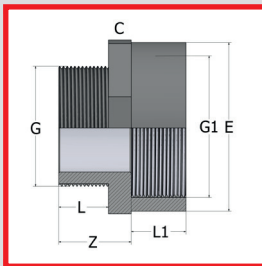
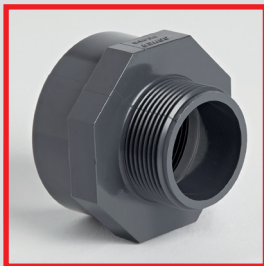
# PVC IMPERIAL PRESSURE FITTINGS THREADED (BSP)

## REDUCING BUSH – SHORT PATTERN



G x G1	PART NO	L	L1	Z	C	Wt (g)	Box
3/4" x 1/4"•	021.093.0300	17	12		32	16	100
3/4" x 3/8"•	021.093.0301	17	14		32	15	100
3/4" x 1/2"	021.093.0302	16.3	15	13.3	30	13	450
1" x 3/8"•	021.093.0401	21	14		36	25	100
1" x 1/2"•	021.093.0402	21	16		32	23	100
1" x 3/4"•	021.093.0403	19.1	16.3	14.8	36	20	300
1 1/4" x 1/2"•	021.093.0502	23	16		46	39	100
1 1/4" x 3/4"•	021.093.0503	23	16		46	38	100
1 1/4" x 1"	021.093.0504	21.4	19.1	16.3	46	35	350
1 1/2" x 3/4"•	021.093.0603	23	16		55	58	100
1 1/2" x 1"•	021.093.0604	23	22		55	53	100
1 1/2" x 1 1/4"	021.093.0605	21.4	21.4	14	50	37	300
2" x 1"•	021.093.0704	27	22		65	90	100
2" x 1 1/4"•	021.093.0705	27	23		65	83	100
2" x 1 1/2"	021.093.0706	25.7	21.4	18.3	65	72	160
2 1/2" x 1 1/4"•	021.093.0805	31	23		80	160	50
2 1/2" x 1 1/2"•	021.093.0806	31	23		80	158	100
2 1/2" x 2"	021.093.0807	30.2	25.7	20.5	80	135	90
3" x 1 1/2"•	021.093.0906	34	23		94	226	50
3" x 2"•	021.093.0907	34	34		94	231	50
3" x 2 1/2"	021.093.0908	33.3	30.2	20.1	95	160	60
4" x 3"	021.093.1009	39.3	33.3	24	120	360	30

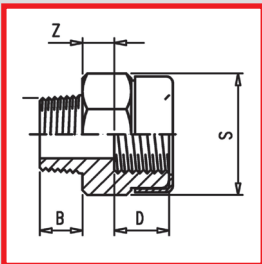
## REDUCING PIECE – MALE / FEMALE



G x G1	PART NO	L	L1	Z	C	E	Wt (g)	Box
1/4" x 3/8"•*	021.293.0100	12	12	19			13	
3/8" x 1/2"	021.293.0201	11.4	15	22	30	28	10	400
1/2" x 3/4"	021.293.0302	15	16.3	24	36	34	17	280
3/4" x 1"	021.293.0403	16.3	19.1	26	46	42	25	150
1" x 1 1/4"	021.293.0504	19.1	21.4	30	55	51	42	220
1 1/4" x 1 1/2"	021.293.0605	21.4	21.4	33	60	58	48	150
1 1/2" x 2"	021.293.0706	21.4	25.7	34	75	72	80	140
2" x 2 1/2"	021.293.0807	25.7	30.2	38	90	89	138	72
2 1/2" x 3"	021.293.0908	30.2	33.3	44	105	103	208	45
3" x 4"	021.293.1009	33.3	39.3	48	130	130	340	24

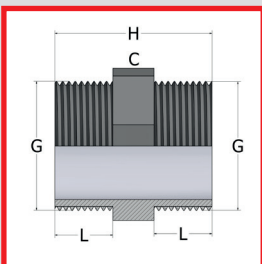
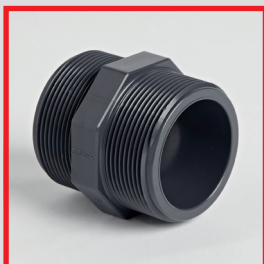
\* PN10 RATED

## REDUCING PIECE – MALE / FEMALE REINFORCED



SIZE	PART NO	Z	B	D	S	Wt (g)	Box
1/4" x 3/8"•	021.2703.0100	8.5	12	12	27	19	50
3/8" x 1/2"•	021.2703.0201	8	12	15	32	26	50
1/2" x 3/4"•	021.2703.0302	10.5	16	16	36	36	50
3/4" x 1"•	021.2703.0403	12	17	22	46	62	50
1" x 1 1/4"•	021.2703.0504	14	21	23	55	90	50
1 1/4" x 1 1/2"•	021.2703.0605	16	23	25	66	148	75
1 1/2" x 2"•	021.2703.0706	21.5	23	28	80	242	50
2" x 2 1/2"•	021.2703.0807	23.5	27	31	94	345	45

## HEXAGON NIPPLE



G	PART NO	L	H	C	Wt (g)	Box
3/8"	021.273.01	11.4	31.7	19	6	900
1/2"	021.273.02	15	42	24	11	500
3/4"	021.273.03	16.3	44	30	18	700
1"	021.273.04	19.1	50	36	28	450
1 1/4"	021.273.05	21.4	58	46	47	240
1 1/2"	021.273.06	21.4	58	50	61	160
2"	021.273.07	25.7	66	65	98	200
2 1/2"	021.273.08	30.2	78	80	144	60
3"	021.273.09	33.3	85	95	230	70
4"	021.273.10	39.3	96	120	345	40

• NON COMER PRODUCT

[sales@epco-plastics.com](mailto:sales@epco-plastics.com)

Call us on 0113 2491155

Speak to one of our dedicated and highly trained sales team, you can also fax 0113-2491166



ABS

PVC IMPERIAL

PVC METRIC

POLYPROPYLENE

COMPRESSION FITTINGS

GUIDELINES