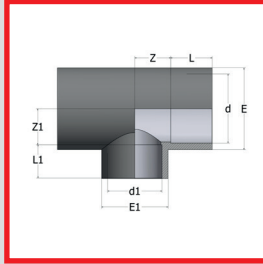
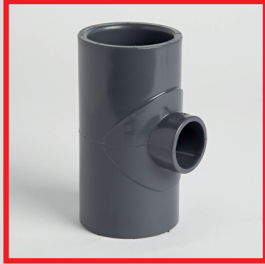


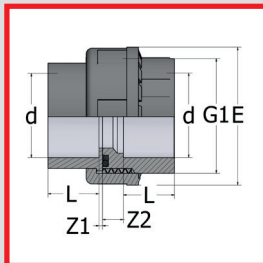
PVC IMPERIAL PRESSURE FITTINGS PLAIN

REDUCING TEE



d x d1	PART NO	L	L1	Z	Z1	E	E1	Wt (g)	Box
3/4" x 1/2"	021.081.0302	19	16	14	14	33.5	28	42	300
1" x 1/2"	021.081.0402	22	16	17	17	42	28	69	140
1" x 3/4"	021.081.0403	22	19	17	17	42	34	70	140
1 1/4" x 1/2"	021.081.0502	26	16	21	21	51	38	112	100
1 1/4" x 3/4"	021.081.0503	26	19	21	21	51	34	115	90
1 1/4" x 1"	021.081.0504	26	22	21	21	51	42	118	90
1 1/2" x 1/2"	021.081.0602	31	16	26	26	61	28	155	110
1 1/2" x 3/4"	021.081.0603	31	19	26	26	61	34	166	110
1 1/2" x 1"	021.081.0604	31	22	26	26	61	42	170	110
1 1/2" x 1 1/4"	021.081.0605	31	26	26	26	61	51	178	100
2" x 1/2"	021.081.0702	38	16	33	33	75	28	268	70
2" x 3/4"	021.081.0703	38	19	33	33	75	34	270	70
2" x 1"	021.081.0704	38	22	33	33	75	42	275	70
2" x 1 1/4"	021.081.0705	38	26	33	33	75	51	288	70
2" x 1 1/2"	021.081.0706	38	31	33	33	75	61	300	60
2 1/2" x 1"	021.081.0804	44	22	39	39	89	42	463	38
2 1/2" x 1 1/4"	021.081.0805	44	26	39	39	89	51	465	38
2 1/2" x 1 1/2"	021.081.0806	44	31	39	39	89	61	465	35
2 1/2" x 2"	021.081.0807	44	38	39	39	89	75	478	32
3" x 1 1/4"	021.081.0905	51	26	47	47	106	51	702	24
3" x 1 1/2"	021.081.0906	51	31	47	47	106	61	740	24
3" x 2"	021.081.0907	51	38	47	47	106	75	740	22
3" x 2 1/2"	021.081.0908	51	44	47	47	106	89	760	22
4" x 1 1/2"	021.081.1006	61	31	57	57	129	61	1250	12
4" x 2"	021.081.1007	61	38	57	57	129	75	1200	12
4" x 2 1/2"	021.081.1008	61	44	57	57	129	89	1220	12
4" x 3"	021.081.1009	61	51	57	57	129	106	1250	10

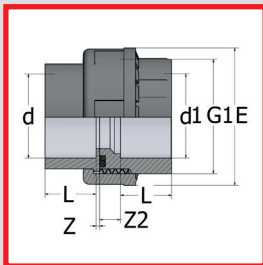
UNION



d	PART NO	L	Z1	Z2	G1	E	Wt (g)	Box
3/8"	021.021.01	14	3	10	3/4"	34	30	200
1/2"	021.021.02	16	3	10	1"	42	41	180
3/4"	021.021.03	19	3	10	1 1/4"	52	67	220
1"	021.021.04	22	3	10	1 1/2"	59	90	130
1 1/4"	021.021.05	26	3	12	2"	72	135	80
1 1/2"	021.021.06	31	3	14	2 1/4"	79	206	120
2"	021.021.07	38	3	18	2 3/4"	96	360	60
2 1/2"*	022.021.075P	44	3	18	3 1/2"	119	580	35
3"*	021.021.09	51	5	18	4"	134	777	24
4"*	021.021.10	61	5	18	5"	163	1150	12

* PN10 RATED

INCH / METRIC ADAPTOR UNION



d x d1	PART NO	L	Z1	Z2	G1	E	Wt (g)	Box
3/8" x 16	023.021.01016	14	3	10	3/4"	34	30	200
1/2" x 20	023.021.02020	16	3	10	1"	42	41	180
3/4" x 25	023.021.03025	19	3	10	1 1/4"	52	67	220
1" x 32	023.021.04032	22	3	10	1 1/2"	59	90	130
1 1/4" x 40	023.021.05040	26	3	12	2"	72	135	80
1 1/2" x 50	023.021.06050	31	3	14	2 1/4"	79	206	60
2" x 63*	023.021.07063	38	3	18	2 3/4"	96	360	30
3" x 90*	023.021.09090	51	5	18	4"	134	777	24
4" x 110*	023.021.10110	61	5	18	5"	163	1150	12

* PN10 RATED

UK Wide Next Day Delivery*

epco customers can place orders up to 5pm for next day delivery to most addresses in the UK*

ABS

PVC IMPERIAL

PVC METRIC

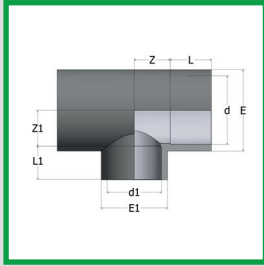
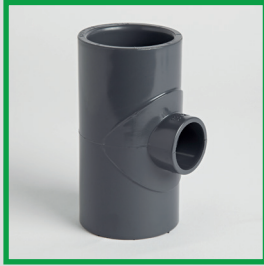
POLYPROPYLENE

COMPRESSION FITTINGS

GUIDELINES



REDUCING TEE



d x d1	PART NO	L	L1	Z	Z1	E	E1	RATED	Wt (g)	Box
20 x 16	022.081.020016P	16	14	11	11	27.5	23.5	16 BAR	25	500
25 x 16	022.081.025016P	19	16	14	14	33.5	28	16 BAR	40	300
25 x 20	022.081.025020P	19	14	14	14	33.5	23.5	16 BAR	42	300
32 x 16	022.081.032016P	22	14	17	17	42	23.5	16 BAR	68	160
32 x 20	022.081.032020P	22	16	17	17	42	28	16 BAR	69	140
32 x 25	022.081.032025P	22	19	17	17	42	33.5	16 BAR	70	140
40 x 16	022.081.040016P	26	14	21	21	51	23.5	16 BAR	100	100
40 x 20	022.081.040020P	26	16	21	21	51	28	16 BAR	112	100
40 x 25	022.081.040025P	26	19	21	21	51	34	16 BAR	115	90
40 x 32	022.081.040032P	26	22	21	21	51	42	16 BAR	118	90
50 x 20	022.081.050020P	31	16	26	26	61	28	16 BAR	155	110
50 x 25	022.081.050025P	31	19	26	26	61	34	16 BAR	166	110
50 x 32	022.081.050032P	31	22	26	26	61	42	16 BAR	170	110
50 x 40	022.081.050040P	31	26	26	26	61	51	16 BAR	178	100
63 x 20	022.081.063020P	38	16	33	33	75	28	16 BAR	268	70
63 x 25	022.081.063025P	38	19	33	33	75	34	16 BAR	270	70
63 x 32	022.081.063032P	38	22	33	33	75	42	16 BAR	283	70
63 x 40	022.081.063040P	38	26	33	33	75	51	16 BAR	288	70
63 x 50	022.081.063050P	38	31	33	33	75	61	16 BAR	292	60
75 x 32	022.081.075032P	44	22	39	39	89	42	16 BAR	463	38
75 x 40	022.081.075040P	44	26	39	39	89	51	16 BAR	465	38
75 x 50	022.081.075050P	44	31	39	39	89	61	16 BAR	465	35
75 x 63	022.081.075063P	44	38	39	39	89	75	16 BAR	478	32
90 x 32•	022.081.090032P							16 BAR		17
90 x 40	022.081.090040P	51	26	47	47	106	51	16 BAR	702	24
90 x 50	022.081.090050P	51	31	47	47	106	61	16 BAR	740	24
90 x 63	022.081.090063P	51	38	47	47	106	75	16 BAR	740	22
90 x 75	022.081.090075P	51	44	47	47	106	89	16 BAR	760	22
110 x 32•	022.081.110032P	61		56				16 BAR	1539	9
110 x 40•	022.081.110040P	61		56				16 BAR	1539	9
110 x 50	022.081.110050P	61	31	57	57	129	61	16 BAR	1250	12
110 x 63	022.081.110063P	61	38	57	57	129	75	16 BAR	1200	12
110 x 75	022.081.110075P	61	44	57	57	129	89	16 BAR	1220	12
110 x 90	022.081.110090P	61	51	57	57	129	106	16 BAR	1250	10
125 x 50•	022.081.125050P	69		64				16 BAR	2340	4
125 x 63	022.081.125063P	69	44	66	66	148	75	16 BAR	1660	8
125 x 75	022.081.125075P	69	44	66	66	148	89	16 BAR	1700	8
125 x 90	022.081.125090P	69	51	66	66	148	106	16 BAR	1750	8
125 x 110	022.081.125110P	69	61	66	66	148	129	16 BAR	1830	8
140 x 50•	022.081.140050P	76		71.5				16 BAR	3198	4
140 x 75	022.081.140075P	76	44	72	72	163	89	16 BAR	2460	4
140 x 90	022.081.140090P	76	51	72	72	163	106	16 BAR	2490	4
140 x 110	022.081.140110P	76	61	72	72	163	129	16 BAR	2530	4
140 x 125	022.081.140125P	76	69	72	72	163	148	16 BAR	2590	4
160 x 75•	022.081.160075P	86		81				16 BAR	4840	2
160 x 90	022.081.160090P	86	51	82	82	184	106	16 BAR	3790	3
160 x 110	022.081.160110P	86	61	82	82	184	129	16 BAR	3840	3
160 x 125	022.081.160125P	86	69	82	82	184	148	16 BAR	3890	3
160 x 140	022.081.160140P	86	76	82	82	184	163	16 BAR	3940	3

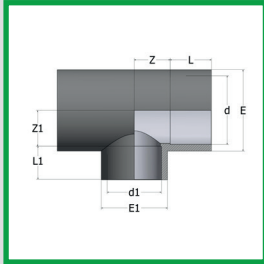
• NON COMER PRODUCT

UK Wide Next Day Delivery*

epco customers can place orders up to 5pm for next day delivery to **most** addresses in the UK*



REDUCING TEE

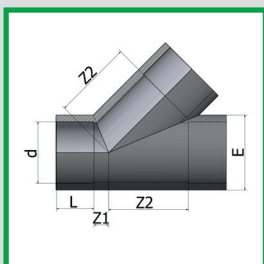


d x d1	PART NO	L	L1	Z	Z1	E	E1	RATED	Wt (g)	Box
180 x 110	022.081.180110K	97	62	93	93	209	135	10 BAR	5550	35
200 x 90	022.081.200090K	106	52	58	102	228	112	10 BAR	5200	50
200 x 110	022.081.200110K	106	63	58	113	228	137	10 BAR	5200	42
200 x 160	022.081.200160K	106	87	87	103	228	185	10 BAR	6200	28
225 x 90	022.081.225090K	119.5	51	58	114	258	112	10 BAR	6550	27
225 x 110	022.081.225110K	119.5	63	58	114	258	135	10 BAR	6600	25
225 x 160	022.081.225160K	119.5	88	84	115	258	193	10 BAR	8300	24
250 x 110	022.081.250110K	131	61	130	171	288	129	10 BAR	12700	12
250 x 160	022.081.250160K	131	86	130	156	288	185	10 BAR	12800	12
250 x 200	022.081.250200K	131	106	130	136	288	232	10 BAR	13100	14
280 x 160	022.081.280160I	146	88	84	153	320	193	8 BAR	12500	16
280 x 225	022.081.280225I	146	117.5	117	148.5	320	258	8 BAR	15200	11
315 x 90	022.081.315090I	164	51	62	158	355	112	8 BAR	14300	13
315 x 110	022.081.315110I	164	62	62	158	355	135	8 BAR	14350	13
315 x 160	022.081.315160I	164	86	83	161	355	193	8 BAR	15150	11
315 x 200	022.081.315200I	164	106	102	179	355	228	8 BAR	16600	10
315 x 225	022.081.315225I	164	118.5	117	162	355	320	8 BAR	17500	10
315 x 250	022.081.315250I	164	131	127	160	355	285	8 BAR	18300	9
400 x 110	022.081.400110F	206	61	55	200	438	134	5 BAR	17800	8
400 x 225	022.081.400225G	206	119	163	258	445	356	6 BAR	38980	1
400 x 315	022.081.400315G	206	164	163	213	445	356	6 BAR	34340	1

REDUCING TEE – FABRICATED

d x d1	PART NO	L	L1	Z	Z1	E	E1	RATED	Wt (g)	Box
355 x 315	022.081.355315E	184	165	294	302	386	352	4 BAR	36000	3
400 x 315	022.081.400315E	206	165	280	302	432	352	4 BAR	38700	3
400 x 355	022.081.400355E	206	184	280	294	432	386	4 BAR	38500	3
500 x 400	022.081.500400E	159	139	485	540	540	436	2.5 BAR	54000	2

Y PIECE / 45° TEE



d	PART NO	L	Z1	Z2	E	RATED	Wt (g)	Box
10	022.071.010P	4		18	16	16 BAR	12	150
12	022.071.012P	4		21	18	16 BAR	14	150
16	022.071.016P	14	5	25	23.5	16 BAR	24	150
20	022.071.020P	16	7	29	27.5	16 BAR	36	180
25	022.071.025P	19	7	36	33.5	16 BAR	59	90
32	022.071.032P	22	8	44	42	16 BAR	103	50
40	022.071.040P	26	10	54	50.5	16 BAR	175	50
50	022.071.050P	31	12	65	61	16 BAR	254	35
63	022.071.063P	38	14	80	74.5	16 BAR	420	18
75	022.071.075K	44	18	101	91	10 BAR	690	12
90	022.071.090K	51	20	122	106	10 BAR	1100	12
110	022.071.110K	61	27	149	133	10 BAR	1950	8
125	022.071.125K	69	30	167	146	10 BAR	3913	3
140	022.071.140K	76	34	190	163	10 BAR	6035	2
160	022.071.160K	86	35	200	189	10 BAR	6600	3
200	022.071.200G	107	49	266		6 BAR	11720	1
225	022.071.225G	120	55	297		6 BAR	16500	1
250	022.071.250G	132	60	330		6 BAR	21470	1

• NON COMER PRODUCT

sales@epco-plastics.com

Call us on 0113 2491155

Speak to one of our dedicated and highly trained sales team, you can also fax 0113-2491166



ABS

PVC IMPERIAL

PVC METRIC

POLYPROPYLENE

COMPRESSION FITTINGS

GUIDELINES